

TadpoleTape™

500°F / 260°C Silicone Rubber Coated Stainless Mesh TadpoleTape™	2-154
320°F / 160°C Aramid High Strength TadpoleTape™	2-155
1200°F / 648°C Precision Fiberglass TadpoleTape™	2-156
1200°F / 648°C Fiberglass Heavy Duty TadpoleTape™: with Rope or Wire Mesh Core	2-157
1350°F / 732°C ProSil™ Silica/Glass Blended Fabric Heavy Duty TadpoleTape™: with Rope or Wire Mesh Core	2-158
1350°F / 732°C ProSilWire™ Silica/Glass Blended Fabric with wire insert Heavy Duty TadpoleTape™: with Rope or Wire Mesh Core	2-159
1500°F / 815°C Fiberglass with Vermiculite Coating Heavy Duty TadpoleTape™: with Rope or Wire Mesh Core	2-160
1800°F / 982°C InSilMax™ Heavy Duty TadpoleTape™: with Rope or Wire Mesh Core	2-161
2000°F / 1093°C CerMax™ Heavy Duty TadpoleTape™: with Rope or Wire Mesh Core	2-162

Tadpoles with Specialized Coatings

550°F / 287°C Fiberglass with PTFE Coating Heavy Duty TadpoleTape™: with Rope or Wire Mesh Core	2-164
550°F / 287°C Rubberized Fiberglass Tacky Cloth Heavy Duty TadpoleTape™: with Rope or Wire Mesh Core	2-166
550°F / 287°C Expanded PTFE Heavy Duty TadpoleTape™: with Rope or Wire Mesh Core	2-167
TT WearGuard	2-168

CUSTOM SIZED TADPOLE GASKET TAPE

The catalogue pages for tadpole gasket tapes show our line of standard materials and sizes that are made by our fabrication shop.

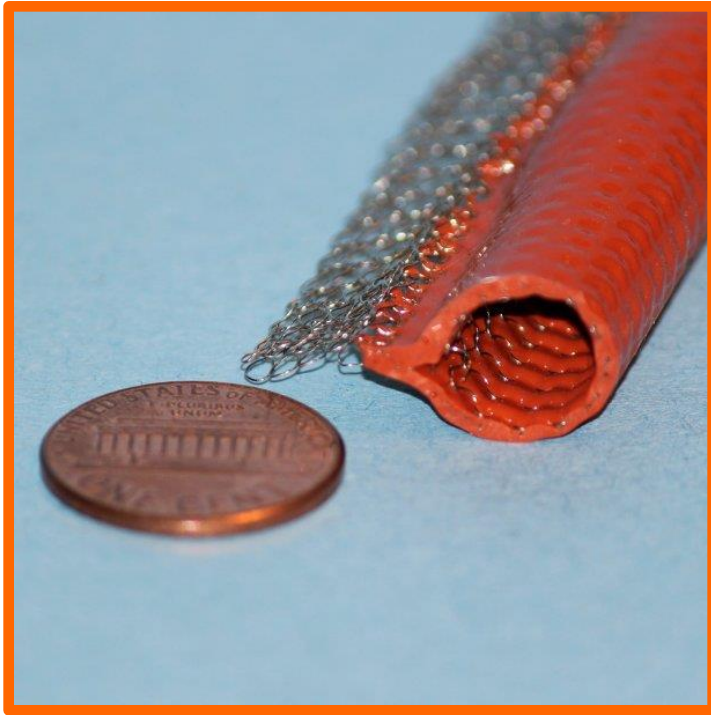
Our tadpole gasket fabrication shop can manufacture tadpoles of almost size and shape using our standard materials, or from other materials not normally used.

Please feel free to request a quote; either a description, or a drawing, or a photo is useful. If you would like us to match materials to an existing tadpole that needs replacement, then either a detailed close-up photo or a sample would be very useful.

Please send quote requests to info@abthermal.com or call the order desk at 610-906-3549.

High Temperature Silicone Rubber Coated Stainless Steel Mesh Tadpole Gasket Seals

500°F / 260°C



Can be used for applications up to 500°F / 260°C continuous rating with weld splatter / molten metal splash protection. These silicone rubber products provide excellent cold temperature performance with flexibility to -76°C for refrigeration and cryogenic applications.

Excellent sealing against liquids and gases.

TT-SS-SR-0.937-0.437 is a 15/16" overall width tadpole with a 7/16" OD bulb. It is a common tadpole to use in cryogenic freezing access doors, such as food processing freezing and packaging lines.

High Temperature & Heat Resistant Silicone Rubber Tadpole Gasket Tape	
Part Number	Feet / Metres per Spool
TT-SS-SR-0.937W-0.437B	100 / 30.48

Aramid (Aromatic Polyamide) Tadpole Tape with Aramid Rope or Wire Mesh Bulb Core

320°F / 160°C TadpoleTape™ High Temperature, Heat Resistant & High Strength



Made from our aramid fabrics and ropes, and metallic mesh ropes, this is a soft and resilient gasket material for effective sealing on light metal flanges and where limited bolting force is available – and where doors and other closures rest on the bulb. The aramid fabric is very abrasion and cut resistant, ideal for high cycle applications. Not suitable for applications involving prolonged sunlight or UV exposure.

Available by-the-foot and standard 50 and 100 feet rolls.

Kevlar® is a popular brand name of an Aramid polyamide material from DuPont. Our Aramid is not a DuPont product.

This product is highly flexible and conformable.

TadpoleTape™ High Temperature & Heat Resistant Aramid		
Rope Core	Stainless Steel or Inconel 600 Mesh Core	Overall Width in / mm
Part Number	Part Number	
TT-A-RC-M025-16-X	TT-A-MC-M025-16-X-Z	1.00 / 25
TT-A-RC-M032-20-X	TT-A-MC-M032-20-X-Z	1.25 / 32
TT-A-RC-M038-24-X	TT-A-MC-M038-24-X-Z	1.50 / 38
TT-A-RC-M044-28-X	TT-A-MC-M044-28-X-Z	1.75 / 44
TT-A-RC-M051-32-X	TT-A-MC-M051-32-X-Z	2.00 / 51
TT-A-RC-M063-40-X	TT-A-MC-M063-40-X-Z	2.50 / 63
TT-A-RC-M076-48-X	TT-A-MC-M076-48-X-Z	3.00 / 76

For the “X” value: specify either A, B, C, D, or E

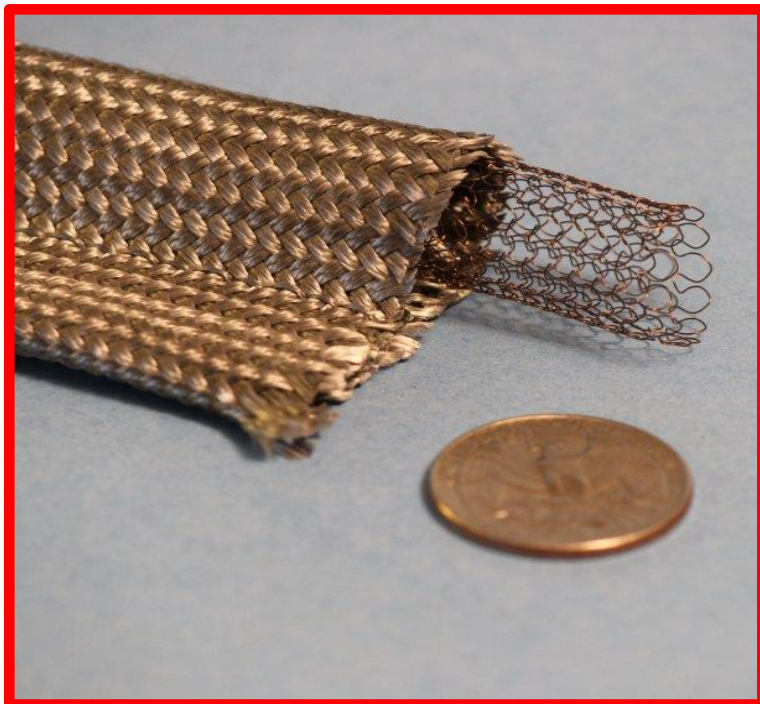
“A” = 3/8” / .375” / 7.9mm; “B” = 1/2” / .500” / 13mm; “C” = 5/8” / .625” / 15.8mm; “D” = 3/4” / .750” / 19mm; “E” = 1” / 1.000” / 25mm

For the “Z” value: specify “S” for Stainless Steel or “I” for Inconel

NOTE: 1.0” OAW not available with 5/8, 3/4 or 1” bulb. 1.25” OAW not available with 1” bulb. 1.5” OAW not available with 1” bulb

OTHER CUSTOM SIZES & SHAPES AVAILABLE – PLEASE INQUIRE

Precision Fiberglass Tadpole Gasket Tape
Oven / Stove / Boiler / Kiln / Paint Booth / Clean Room Door Seals
1200°F / 648°C TadpoleTape™ Very High Temperature & Heat Resistant



- Precision Tadpole with consistent dimension of bulb and tail.
- Small tail is hollow, and can be supplied filled with a cord or rope to use as a mounting point with slotted metalwork.
- High pushback 304 stainless steel hollow sleeve inside of bulb provides excellent pushback with low compression set.
- Heat treated to result in an extremely clean surface that sheds extremely few fibers and no organic odors. Suitable for paint booth and food service applications.
- Fabricated from high quality type E fiberglass that will not burn and will withstand continuous exposure to temperatures of 1200°F / 648°C.
- This product resists most acids and alkalis and is unaffected by most bleaches and solvents. It is highly flexible and conformable. The base fiber is manufactured to the specifications of ASTM D-578, ASTM committee D13, and subcommittee D13.18.

- Two sizes available:
- 1) 1 3/8 inch OAW (Over All Width) with a 5/8" Bulb with hollow 304 stainless steel mesh core bulb material, with 3/4" tail. The knitted wire mesh core provides excellent compression and pushback and high cycle life. ID of the hollow metal mesh bulb core is 1/2 inch. Weight is 1.75oz per foot.
 - 2) 1 1/4 inch OAW (Over All Width) with a 1/2" Bulb with hollow 304 stainless steel mesh core bulb material, with 3/4" tail. The knitted wire mesh core provides excellent compression and pushback and high cycle life. ID of the hollow metal mesh bulb core is 7/16 inch. Weight is 1.20oz per foot.

Very High Temperature & Heat Resistant Heat Treated Fiberglass Precision Tadpole Gasket Tape with Hollow Stainless Steel Knit Mesh Core		
Part Number	Bulb Size	Feet / Metres per coil
TT-FG-HSSMC-M013-08-25-X	1/2"	25 / 7.6
TT-FG HSSMC-M013-08-50-X	1/2"	50 / 15.2
TT-FG HSSMC-M013-08-250-X	1/2"	250 / 76.2
TT-FG HSSMC-M013-08-BTF-X	1/2"	By The Foot
TT-FG-HSSMC-M016-10-25-X	5/8"	25 / 7.6
TT-FG HSSMC-M016-10-50-X	5/8"	50 / 15.2
TT-FG HSSMC-M016-10-250-X	5/8"	250 / 76.2
TT-FG HSSMC-M016-10-BTF-X	5/8"	By The Foot

Genuine TadpoleTape™ gasket is designed to provide a high temperature thermal seal in industrial, laboratory and commercial ovens and dryers. Used on residential self cleaning ovens as a door gasket seal.

Custom sized tadpole gasket tapes are available

Fiberglass Tadpole Tape with Fiberglass Rope or Wire Mesh Bulb Core 1200°F / 648°C TadpoleTape™ Very High Temperature & Heat Resistant



Made from our heavy duty fiberglass fabrics and ropes, and metallic mesh ropes, this is a soft and resilient gasket material for effective sealing on light metal flanges and where limited bolting force is available – and where doors and other closures rest on the bulb.

Available by-the-foot and standard 50 and 100 feet rolls.

A Heat Treated version of this product is available for clean room door sealing – please enquire

Fabricated from high quality type E fiberglass that will not burn and will withstand continuous exposure to temperatures of 1200°F / 648°C. This product resists most acids and alkalis and is unaffected by most bleaches and solvents. It is highly flexible and conformable.

TadpoleTape™ Very High Temperature & Heat Resistant Fiberglass		
Rope Core	Stainless Steel or Inconel 600 Mesh Core	Over All Width in / mm
Part Number	Part Number	
TT-FG-RC-M025-16-X	TT-FG-MC-M025-16-X-Z	1.00 / 25
TT-FG-RC-M032-20-X	TT-FG-MC-M032-20-X-Z	1.25 / 32
TT-FG-RC-M038-24-X	TT-FG-MC-M038-24-X-Z	1.50 / 38
TT-FG-RC-M044-28-X	TT-FG-MC-M044-28-X-Z	1.75 / 44
TT-FG-RC-M051-32-X	TT-FG-MC-M051-32-X-Z	2.00 / 51
TT-FG-RC-M063-40-X	TT-FG-MC-M063-40-X-Z	2.50 / 63
TT-FG-RC-M076-48-X	TT-FG-MC-M076-48-X-Z	3.00 / 76

For the “X” value: specify either A, B, C, D, or E

“A” = 3/8” / .375” / 7.9mm; “B” = 1/2” / .500” / 13mm; “C” = 5/8” / .625” / 15.8mm; “D” = 3/4” / .750” / 19mm; “E” = 1” / 1.000” / 25mm

For the “Z” value: specify “S” for Stainless Steel or “I” for Inconel

NOTE: 1.0” OAW not available with 5/8, 3/4 or 1” bulb. 1.25” OAW not available with 1” bulb. 1.5” OAW not available with 1” bulb

OTHER CUSTOM SIZES & SHAPES AVAILABLE – PLEASE INQUIRE

**ProSil™ Silica/Glass Blended Fabric Tadpole Tape
with Rope or Wire Mesh Core
1350°F / 732°C TadpoleTape™ High Temperature & Heat Resistant**



Made from our proprietary blended silica/fiberglass heavy duty fabric, this is a soft and resilient gasket material for effective sealing on metal flanges and where limited bolting force is available – and where doors and other closures rest on the bulb.

Outperforms standard fiberglass tadpole tapes in higher temperature applications. Remains soft and workable at temperatures where fiberglass tapes become brittle

Available by-the-foot and standard 50 and 100 feet rolls.

1350°F / 732°C continuous rating:
Highly flexible and conformable.

TadpoleTape™ Very High Temperature & Heat Resistant ProSil™ Blended Silica/Glass		
Rope Core	Stainless Steel or Inconel 600 Mesh Core	Overall Width in / mm
Part Number	Part Number	
TT-FGS-RC-M025-16-X	TT-FGS-MC-M025-16-X-Z	1.00 / 25
TT-FGS-RC-M032-20-X	TT-FGS-MC-M032-20-X-Z	1.25 / 32
TT-FGS-RC-M038-24-X	TT-FGS-MC-M038-24-X-Z	1.50 / 38
TT-FGS-RC-M044-28-X	TT-FGS-MC-M044-28-X-Z	1.75 / 44
TT-FGS-RC-M051-32-X	TT-FGS-MC-M051-32-X-Z	2.00 / 51
TT-FGS-RC-M063-40-X	TT-FGS-MC-M063-40-X-Z	2.50 / 63
TT-FGS-RC-M076-48-X	TT-FGS-MC-M076-48-X-Z	3.00 / 76

For the “X” value: specify either A, B, C, D, or E

“A” = 3/8” / .375” / 7.9mm; “B” = 1/2” / .500” / 13mm; “C” = 5/8” / .625” / 15.8mm; “D” = 3/4” / .750” / 19mm; “E” = 1” / 1.000” / 25mm

For the “Z” value: specify “S” for Stainless Steel or “I” for Inconel

NOTE: 1.0” OAW not available with 5/8, 3/4 or 1” bulb. 1.25” OAW not available with 1” bulb. 1.5” OAW not available with 1

OTHER CUSTOM SIZES & SHAPES AVAILABLE – PLEASE INQUIRE

ProSilWire™ Silica/Glass Blended Fabric with Wire Insert
Tadpole Tape with Rope or Wire Mesh Core
1350°F / 732°C TadpoleTape™ High Temperature & Heat Resistant



Made from our proprietary blended silica/fiberglass heavy duty fabric, this is a soft and resilient gasket material for effective sealing on metal flanges and where limited bolting force is available – and where doors and other closures rest on the bulb.

The fabric has a wire insert for additional strength and dimensional stability.

Outperforms standard fiberglass tadpole tapes in higher temperature applications. Remains soft and workable at temperatures where fiberglass tapes become brittle.

Available by-the-foot and standard 50 and 100 feet rolls.

1300°F / 704°C continuous rating:
Highly flexible and conformable.

TadpoleTape™ Very High Temperature & Heat Resistant ProSilWire™ Blended Silica/Glass Wire Insert		
Rope Core	Stainless Steel or Inconel 600 Mesh Core	Overall Width in / mm
Part Number	Part Number	
TT-FGSWI-RC-M025-16-X	TT-FGSWI-MC-M025-16-X-Z	1.00 / 25
TT-FGSWI-RC-M032-20-X	TT-FGSWI-MC-M032-20-X-Z	1.25 / 32
TT-FGSWI-RC-M038-24-X	TT-FGSWI-MC-M038-24-X-Z	1.50 / 38
TT-FGSWI-RC-M044-28-X	TT-FGSWI-MC-M044-28-X-Z	1.75 / 44
TT-FGSWI-RC-M051-32-X	TT-FGSWI-MC-M051-32-X-Z	2.00 / 51
TT-FGSWI-RC-M063-40-X	TT-FGSWI-MC-M063-40-X-Z	2.50 / 63
TT-FGSWI-RC-M076-48-X	TT-FGSWI-MC-M076-48-X-Z	3.00 / 76

For the “X” value: specify either A, B, C, D, or E

“A” = 3/8” / .375” / 7.9mm; “B” = 1/2” / .500” / 13mm; “C” = 5/8” / .625” / 15.8mm; “D” = 3/4” / .750” / 19mm; “E” = 1” / 1.000” / 25mm

For the “Z” value: specify “S” for Stainless Steel or “I” for Inconel

NOTE: 1.0” OAW not available with 5/8, 3/4 or 1” bulb. 1.25” OAW not available with 1” bulb. 1.5” OAW not available with 1” bulb

OTHER CUSTOM SIZES & SHAPES AVAILABLE – PLEASE INQUIRE

Vermiculite Coated Fiberglass Tadpole Tape / Rope or Wire Mesh Core 1500°F / 815°C High Temperature & Heat Resistant



FlameShield™ 1500 Made from our heavy duty fabrics and ropes/wire mesh; this is a soft and resilient gasket material for effective sealing on light metal flanges and where limited bolting force is available – and where doors and other closures rest on the bulb of the packing.

Available by-the-foot and standard 50 and 100 feet rolls.

1500°F / 815°C continuous rating. Certified to meet the requirements of ASTM E 162, ASTM E 662 & SMP 800-C for surface flammability, smoke and toxic gas generation.

Fabricated from E fiberglass that will not burn. This product resists most acids and alkalis and is unaffected by most bleaches and solvents. It is highly flexible and conformable. Meets Federal Railroad Administration requirements for surface flammability and rate of smoke generation.

TadpoleTape™ Very High Temperature & Heat Resistant Vermiculite Coated Fiberglass		
Rope Core	Stainless Steel or Inconel 600 Mesh Core	Overall Width in / mm
Part Number	Part Number	
TT-FGVC-RC-M025-16-X	TT-FGVC-MC-M025-16-X-Z	1.00 / 25
TT-FGVC-RC-M032-20-X	TT-FGVC-MC-M032-20-X-Z	1.25 / 32
TT-FGVC-RC-M038-24-X	TT-FGVC-MC-M038-24-X-Z	1.50 / 38
TT-FGVC-RC-M044-28-X	TT-FGVC-MC-M044-28-X-Z	1.75 / 44
TT-FGVC-RC-M051-32-X	TT-FGVC-MC-M051-32-X-Z	2.00 / 51
TT-FGVC-RC-M063-40-X	TT-FGVC-MC-M063-40-X-Z	2.50 / 63
TT-FGVC-RC-M076-48-X	TT-FGVC-MC-M076-48-X-Z	3.00 / 76

For the “X” value: specify either A, B, C, D, or E

“A” = 3/8” / .375” / 7.9mm; “B” = 1/2” / .500” / 13mm; “C” = 5/8” / .625” / 15.8mm; “D” = 3/4” / .750” / 19mm; “E” = 1” / 1.000” / 25mm

For the “Z” value: specify “S” for Stainless Steel or “I” for Inconel

NOTE: 1.0” OAW not available with 5/8, 3/4 or 1” bulb. 1.25” OAW not available with 1” bulb. 1.5” OAW not available with 1” bulb

OTHER CUSTOM SIZES & SHAPES AVAILABLE – PLEASE INQUIRE

Silica Tadpole Tape With Rope or Wire Mesh Core
1800°F / 982°C InSilMax™ High Temperature, Heat & Flame Resistant



InSilMax™ TadpoleTape™ made from our heavy duty silica fabrics for the cover material and ropes or wire mesh for the bulb materials; this is a soft and resilient gasket material for effective sealing on light metal flanges and where limited bolting force may be available; doors and access covers rest on the bulb. Also used in butterfly valve installations.

The tail of the tadpole is typically fastened with metal fasteners or with grab strips.

Available by-the-foot and standard 50 and 100 feet rolls.

Intermittent operation to 1900°F/1037°C.

TadpoleTape™ Very High Temperature & Heat Resistant InSilMax™ Silica		
Rope Core	Stainless Steel or Inconel 600 Mesh Core	Overall Width in / mm
Part Number	Part Number	
TT-S-RC-M025-16-X	TT-S-MC-M025-16-X-Z	1.00 / 25
TT-S-RC-M032-20-X	TT-S-MC-M032-20-X-Z	1.25 / 32
TT-S-RC-M038-24-X	TT-S-MC-M038-24-X-Z	1.50 / 38
TT-S-RC-M044-28-X	TT-S-MC-M044-28-X-Z	1.75 / 44
TT-S-RC-M051-32-X	TT-S-MC-M051-32-X-Z	2.00 / 51
TT-S-RC-M063-40-X	TT-S-MC-M063-40-X-Z	2.50 / 63
TT-S-RC-M076-48-X	TT-S-MC-M076-48-X-Z	3.00 / 76

For the “X” value: specify either A, B, C, D, or E

“A” = 3/8” / .375” / 7.9mm; “B” = 1/2” / .500” / 13mm; “C” = 5/8” / .625” / 15.8mm; “D” = 3/4” / .750” / 19mm; “E” = 1” / 1.000” / 25mm

For the “Z” value: specify “S” for Stainless Steel or “I” for Inconel

NOTE: 1.0” OAW not available with 5/8, 3/4 or 1” bulb. 1.25” OAW not available with 1” bulb. 1.5” OAW not available with 1” bulb

OTHER CUSTOM SIZES & SHAPES AVAILABLE – PLEASE INQUIRE

Ceramic Fiber Tadpole Tape With Rope or Wire Mesh Core
2000°F / 1093°C CerMax™ TadpoleTape™ Extreme High Temperature Heat Flame Resistant



Made from our highest temperature ceramic fiber inconel wire inserted materials, this is a soft and resilient gasket material for effective sealing on metal flanges and where limited bolting force is available – and where doors and other closures rest on the bulb of the tape.

Available by-the-foot and standard 50 and 100 feet rolls.

Can be used at 2000°F / 1093°C continuously.

TadpoleTape™ Very High Temperature & Heat Resistant CerMax™ Ceramic		
Rope Core	Stainless Steel or Inconel 600 Mesh Core	Over All Width in / mm
Part Number	Part Number	
TT-C-RC-M025-16-X	TT-C-MC-M025-16-X-Z	1.00 / 25
TT-C-RC-M032-20-X	TT-C-MC-M032-20-X-Z	1.25 / 32
TT-C-RC-M038-24-X	TT-C-MC-M038-24-X-Z	1.50 / 38
TT-C-RC-M044-28-X	TT-C-MC-M044-28-X-Z	1.75 / 44
TT-C-RC-M051-32-X	TT-C-MC-M051-32-X-Z	2.00 / 51
TT-C-RC-M063-40-X	TT-C-MC-M063-40-X-Z	2.50 / 63
TT-C-RC-M076-48-X	TT-C-MC-M076-48-X-Z	3.00 / 76

For the “X” value: specify either A, B, C, D, or E

“A” = 3/8” / .375” / 7.9mm; “B” = 1/2” / .500” / 13mm; “C” = 5/8” / .625” / 15.8mm; “D” = 3/4” / .750” / 19mm; “E” = 1” / 1.000” / 25mm

For the “Z” value: specify “S” for Stainless Steel or “I” for Inconel

NOTE: 1.0” OAW not available with 5/8, 3/4 or 1” bulb. 1.25” OAW not available with 1” bulb. 1.5” OAW not available with 1” bulb

OTHER CUSTOM SIZES & SHAPES AVAILABLE – PLEASE INQUIRE

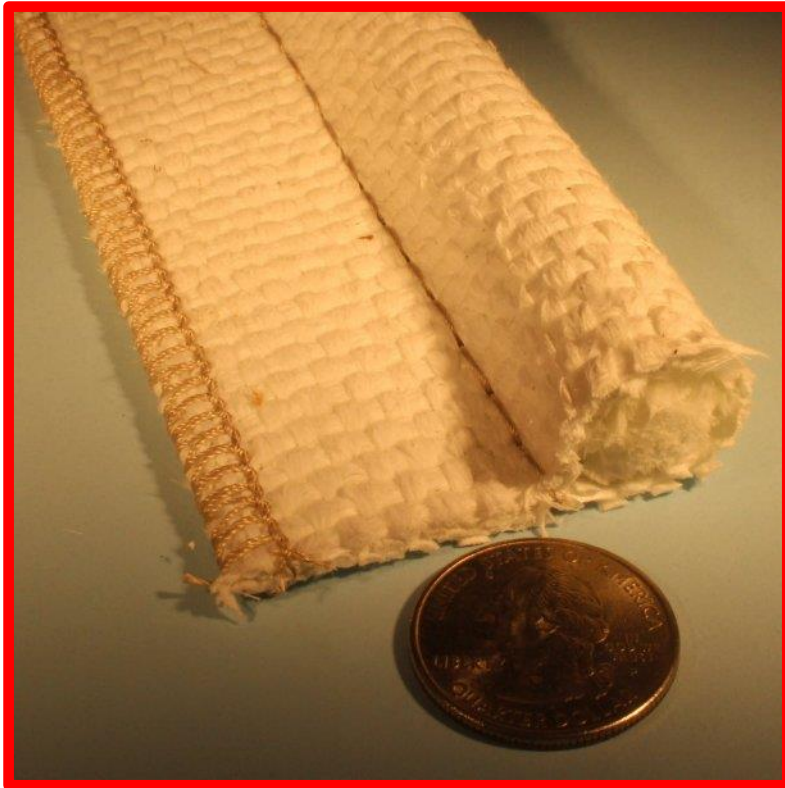
CerMax Tadpole Tape Technical Data

CerMax is alumino-silicate based refractory fiber. White and odorless. Available with either a fiberglass or wire re-inforcement. Some organic binder is present, and will smoke-off at elevated temperatures. Once the organics have smoked-off, the product will turn white again. If smoke free operation is required, then it should be heat treated before use.

Chemical & Physical Data: Total Al_2O_3 and SiO_2 > 97% (Al_2O_3 : 47%); Fe_2O_3 <1.1%. Weight Loss (1800°F) 8-10%; Refractory Fiber content >85%. Fiber diameter: 2 - 4 microns; Fiber length: 100 - 250 mm. Fiber shrinkage (1800°F, 3 hr) <3.5%

Thermal Conductivity: 570°F: 0.84 BTU/ft² °F/in (0.12 W/m °K). 1100°F: 0.91 BTU/ft² °F/in (0.13 W/m °K). 1800°F: 1.19 BTU/ft² °F/in (0.17 W/m °K).

Fiberglass with PTFE Coating Tadpole Tape: Rope or Wire Mesh Core 550°F / 287°C TadpoleTape™ High Temperature, Heat & Chemical Resistance



- PTFE Coated Fiberglass

Made from our heavy duty fabrics and ropes/wire mesh; this is a soft and resilient gasket material for effective sealing on light metal flanges and where limited bolting force is available – and where doors and other closures rest on the bulb of the packing.

This fabric offers the advantage of a non-asbestos material with higher temperature range and with excellent resistance to almost all solvents, caustics and acids.

The base fabric is rated to 1000°F / 537°C. PTFE melting point is 620°F / 327°C.

Available by-the-foot and standard 50 and 100 feet rolls.

Other Sizes available – please call

The PTFE is applied to the tadpole tape by dipping the tape through an immersion tank of liquid PTFE dispersion. The tape is then heated and air dried as it leaves the dip tank.

The result is a PTFE coating on the tape which is soft, robust and flexible; however, it can be abrasively removed from the tape with aggressive fingernail scraping, resulting in a thinner and thinner layer of ptfе remaining with each pass.

The PTFE also causes the yarns to be sealed and the small gaps between the yarns filled, resulting in an almost air-tight / liquid-tight tape.

**Fiberglass with PTFE Coating Tadpole Tape:
Rope or Wire Mesh Core (continued)
550°F / 287°C TadpoleTape™ High Temperature, Heat & Chemical Resistance**



Rope Core



Metal Mesh Rope Core

TadpoleTape™ High Temperature & Heat Resistant PTFE coated Fiberglass		
Rope Core	Stainless Steel or Inconel 600 Mesh Core	Overall Width in / mm
Part Number	Part Number	
TT-FGPT-RC-M025-16-X	TT-FGPT-MC-M025-16-X-Z	1.00 / 25
TT-FGPT-RC-M032-20-X	TT-FGPT-MC-M032-20-X-Z	1.25 / 32
TT-FGPT-RC-M038-24-X	TT-FGPT-MC-M038-24-X-Z	1.50 / 38
TT-FGPT-RC-M044-28-X	TT-FGPT-MC-M044-28-X-Z	1.75 / 44
TT-FGPT-RC-M051-32-X	TT-FGPT-MC-M051-32-X-Z	2.00 / 51
TT-FGPT-RC-M063-40-X	TT-FGPT-MC-M063-40-X-Z	2.50 / 63
TT-FGPT-RC-M076-48-X	TT-FGPT-MC-M076-48-X-Z	3.00 / 76

For the “X” value: specify either A, B, C, D, or E

“A” = 3/8” / .375” / 7.9mm; “B” = 1/2” / .500” / 13mm; “C” = 5/8” / .625” / 15.8mm; “D” = 3/4” / .750” / 19mm; “E” = 1” / 1.000” / 25mm

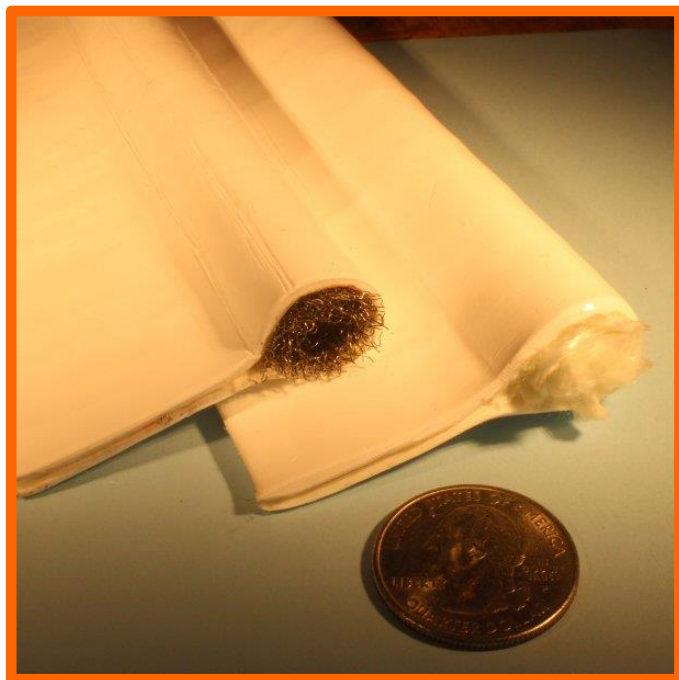
For the “Z” value: specify “S” for Stainless Steel or “I” for Inconel

NOTE: 1.0” OAW not available with 5/8, 3/4 or 1” bulb. 1.25” OAW not available with 1” bulb. 1.5” OAW not available with 1” bulb

OTHER CUSTOM SIZES & SHAPES AVAILABLE – PLEASE INQUIRE

Available by-the-foot or in standard lengths of 50 and 100 feet.

White Rubber Coated Fiberglass Tadpole Tape (Tacky Cloth) with Rope Core 550°F / 287°C: Tuff-Flex™ TadpoleTape™ High Temperature *With or Without Wire Insert*



TadpoleTape™ made from Tuff-Flex™ 550 tacky cloth.

This is a widely used tadpole tape that provides a resilient and non-absorbent gasket material for service against steam, air, water and gases.

Especially useful where a rough or uneven surface or flange exists. The fabric is a fiberglass base with a special white rubber formulation. The fabric is tacky, and has a plastic film surface covering that is removed before installation. The fabric will stick to itself once the film is removed.

Same price with and without wire insert.

Available by-the-foot and standard 50 and 100 feet rolls.

Other sizes available.

Wire Inserted Version: The fill (width wise) yarn for this version of the fabric has a twisted brass wired formed with it, providing additional strength, stability and electrical conductivity/shielding.

TadpoleTape™ High Temperature & Heat Resistant White Rubber Coated Fiberglass (Tacky Cloth)		
Rope Core	Stainless Steel or Inconel 600 Mesh Core	Over All Width in / mm
Part Number	Part Number	
TT-FG-TC-RC-M025-16-X-Y	TT-FG-TC-MC-M025-16-X-Y-Z	1.00 / 25
TT-FG-TC-RC-M032-20-X-Y	TT-FG-TC-MC-M032-20-X-Y-Z	1.25 / 32
TT-FG-TC-RC-M038-24-X-Y	TT-FG-TC-MC-M038-24-X-Y-Z	1.50 / 38
TT-FG-TC-RC-M044-28-X-Y	TT-FG-TC-MC-M044-28-X-Y-Z	1.75 / 44
TT-FG-TC-RC-M051-32-X-Y	TT-FG-TC-MC-M051-32-X-Y-Z	2.00 / 51
TT-FG-TC-RC-M063-40-X-Y	TT-FG-TC-MC-M063-40-X-Y-Z	2.50 / 63
TT-FG-TC-RC-M076-48-X-Y	TT-FG-TC-MC-M076-48-X-Y-Z	3.00 / 76

For the “X” value: specify either A, B, C, D, or E

“A” = 3/8” / .375” / 7.9mm; “B” = 1/2” / .500” / 13mm; “C” = 5/8” / .625” / 15.8mm; “D” = 3/4” / .750” / 19mm; “E” = 1” / 1.000” / 25mm

For the “Y” value: specify “W” to specify with wire insert use “N” to specify no wire

For the “Z” value: specify “S” for Stainless Steel or “I” for Inconel

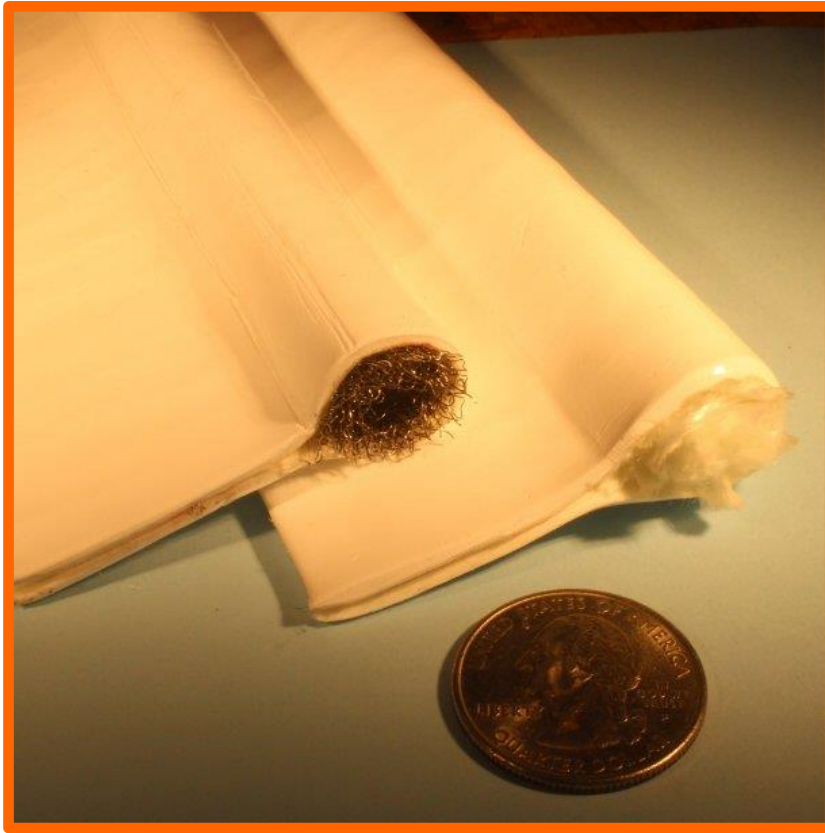
NOTE: 1.0” OAW not available with 5/8, 3/4 or 1” bulb. 1.25” OAW not available with 1” bulb. 1.5” OAW not available with 1” bulb

Curing: It is recommended that this material be cured in situ. This material must be heated to a minimum of 300°F within 60 minutes, then it must sit at 300°F or higher for 90 minutes for the rubber to fully cure.

Do not overtorque the material during this curing time or the rubber will be squeezed off of the base material.

If the material is not fully cured, the rubber will drip from the material causing voids. After curing the material can be exposed to a lower operational temperature.

Expanded PTFE Tadpole Tape with Rope or Wire Mesh Core 550°F / 287°C TadpoleTape™ High Temperature & Chemical Resistance



Made from expanded PTFE (ePTFE)

Pure ePTFE tape formed into a tadpole with either a rope core or stainless steel mesh core. Excellent corrosion resistance, high pressure resistance, easy to use.

Excellent resistance to almost all solvents, caustics and acids.

PTFE melting point is 620°F / 327°C.

Standard Roll of 100 feet. Sold in Full Rolls Only

TadpoleTape™ High Temperature & Heat Resistant ePTFE		
Rope Core	Stainless Steel or Inconel 600 Mesh Core	Over All Width in / mm
Part Number	Part Number	
TT-EPT-RC-M025-16-X-Y	TT-EPT-MC-M025-16-X-Y-Z	1.00 / 25
TT-EPT-RC-M032-20-X-Y	TT-EPT-MC-M032-20-X-Y-Z	1.25 / 32
TT-EPT-RC-M038-24-X-Y	TT-EPT-MC-M038-24-X-Y-Z	1.50 / 38
TT-EPT-RC-M044-28-X-Y	TT-EPT-MC-M044-28-X-Y-Z	1.75 / 44
TT-EPT-RC-M051-32-X-Y	TT-EPT-MC-M051-32-X-Y-Z	2.00 / 51
TT-EPT-RC-M063-40-X-Y	TT-EPT-MC-M063-40-X-Y-Z	2.50 / 63
TT-EPT-RC-M076-48-X-Y	TT-EPT-MC-M076-48-X-Y-Z	3.00 / 76

For the “X” value: specify either A, B, C, D, or E

“A” = 3/8" / .375" / 7.9mm; “B” = 1/2" / .500" / 13mm; “C” = 5/8" / .625" / 15.8mm; “D” = 3/4" / .750" / 19mm; “E” = 1" / 1.000" / 25mm

For the “Y” value: specify “W” to specify with wire insert use “N” to specify no wire

For the “Z” value: specify “S” for Stainless Steel or “I” for Inconel

NOTE: 1.0" OAW not available with 5/8, 3/4 or 1" bulb. 1.25" OAW not available with 1" bulb. 1.5" OAW not available with 1" bulb

OTHER SIZES AVAILABLE – PLEASE INQUIRE

TTWearGuard

Most Tadpole Tapes can be wrapped in a stainless steel mesh to offer high degree of abrasion resistance.

Please enquire on pricing.

Custom Size and Custom Construction TadpoleTape™

Our fabrication shop can produce almost any size and shape gasket, tadpole shape or almost any other shape.

Some of the common shapes include double bulb, square bulb, and metal mesh covered.

To assist our fabrication shop, any sketch, drawing, or photo of an existing item would be useful.

Please contact us to obtain a price and time quotation.